

# Making Your Home Beautiful Inside and Out



-Interior Painting -Exterior Painting -Wallpaper Removal-  
Drywall Repairs -Cabinetry Painting -New Construction  
Residential Painting-Commercial Painting  
-Epoxy Flooring -  
Basements-Garages-Businesses-Patios-Countertops

[www.josephriverspainting.com](http://www.josephriverspainting.com)

[jrivers119@gmail.com](mailto:jrivers119@gmail.com)



# Meet some of the Crew

JOSEPH RIVERS PAINTING HAS 20 + PROFESSIONAL PAINTERS WHO PAY CLOSE ATTENTION TO DETAIL, HAVE KNOWLEDGE AND THE ABILITY TO OPERATE EQUIPMENT TO DO LARGER SCALE PROJECTS. THE PREPARATION AND PROCESS THEY USE TO MAKE SURE THE CUSTOMER IS GETTING THE BEST QUALITY SERVICE AS POSSIBLE, AND OUR EXECUTION PROCESS IS CLEAN AND EFFICIENT.



TUCK

Google  
Page/Reviews



[www.josephriverspainting.com](http://www.josephriverspainting.com)

- JOSEPH RIVERS: OWNER
- COURTNEY RIVERS: OWNER
- DENNIS CANFIELD: LEAD FOREMAN AND PAINTER
- ROB RIVERS: FOREMAN, PAINTER AND TEACHER
- BILL HATHAWAY: FOREMAN AND PAINTER
- JOHN FORDYCE: FOREMAN AND PAINTER
- MAT RICE: FOREMAN AND PAINTER



Kolbe Fuller

Peck

Mat R.

Cody Rowley



Logan S.

Rob

Kenny

Courtney Rivers

Joseph Rivers

Dennis Canfield

Rob Rivers (Papa Riv)

Bill Hathaway

John Fordyce

Courtney Rainbow

Jordan Southworth

Cody Rowley

Jacob S.

Kiersten



# SERVICES WE OFFER

- Residential Interior Painting
- Residential Exterior Painting
- Commercial Interior Painting
- Commercial Exterior Painting
- Cabinetry Painting
- Wallpaper Removal
- Deck and Porch Painting
- Pressure Washing (Also soft wash)
- Epoxy Flake Floors
- Epoxy Metallic Floors
- Barn Restoration
- Roof Coatings ✓
- Concrete staining & sealing
- Sheetrock Installation & Repair





Take  
a look!



**Joseph Rivers**  
PAINTING  
INTERIOR | EXTERIOR  
**(607) 745-5370**



AND ENJOY



# Interior Residential Painting

## **FURNITURE.**

We will move any furniture, blinds, etc. away from the painting surface.

## **COVERING/MASKING.**

Any surface that will not be painted will be covered or masked off before the project. Plastic will cover any furniture or floors to eliminate possible damage.

## **DRYWALL.**

Holes, cracks or missing texture will be repaired in drywall before the painting process begins.

## **CLEANING.**

The surface must be clean and dry before we begin – we will wipe down all surfaces to ensure the best paint adhesion.

## **CAULKING.**

Any cracks will be re-caulked if necessary.

## **SCRAPING AND SANDING.**

All loose paint will be scraped away and surfaces sanded where needed before we begin painting.

## **PAINTING.**

Typically, we spray or roll ceilings first to apply an even coat, trim, and then the walls with two finish coats of paint.

## **CUTTING IN.**

Painting the edges and “cutting in” takes skill and experience to do it right. Our process uses slow, long strokes to get the best results.

## **CLEAN UP.**

All coverings and masking will be removed by our crews once the painting is completed. No mess will be left behind from our crews.

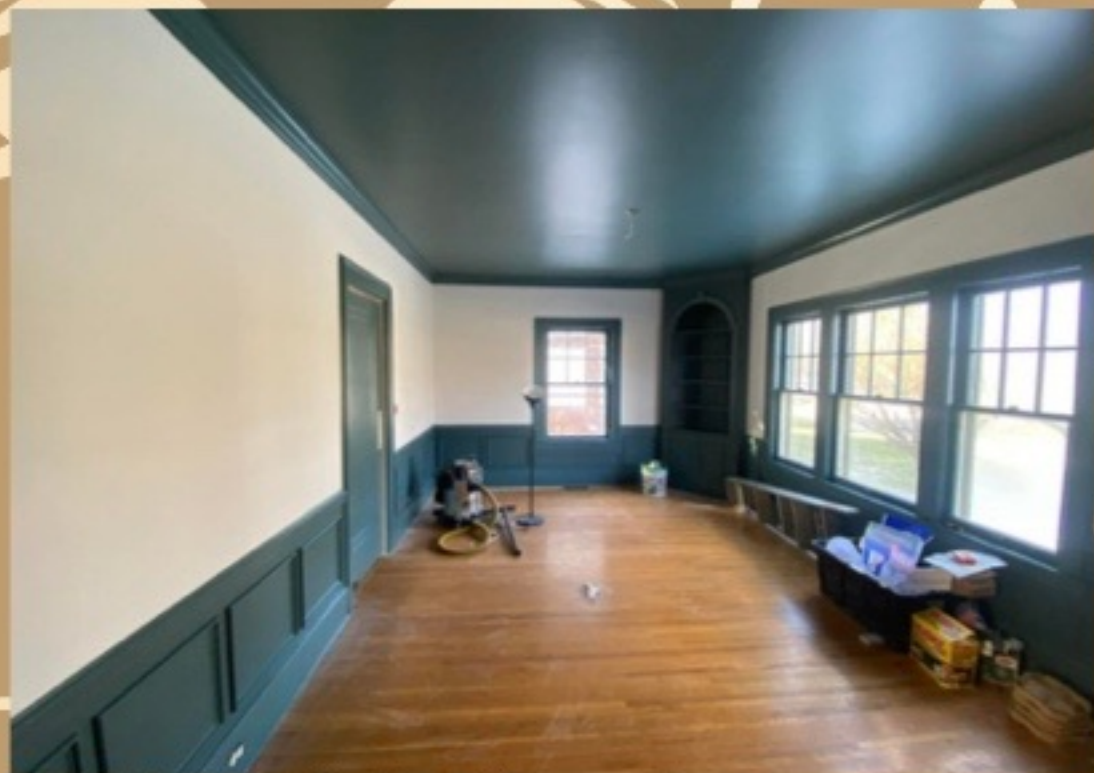
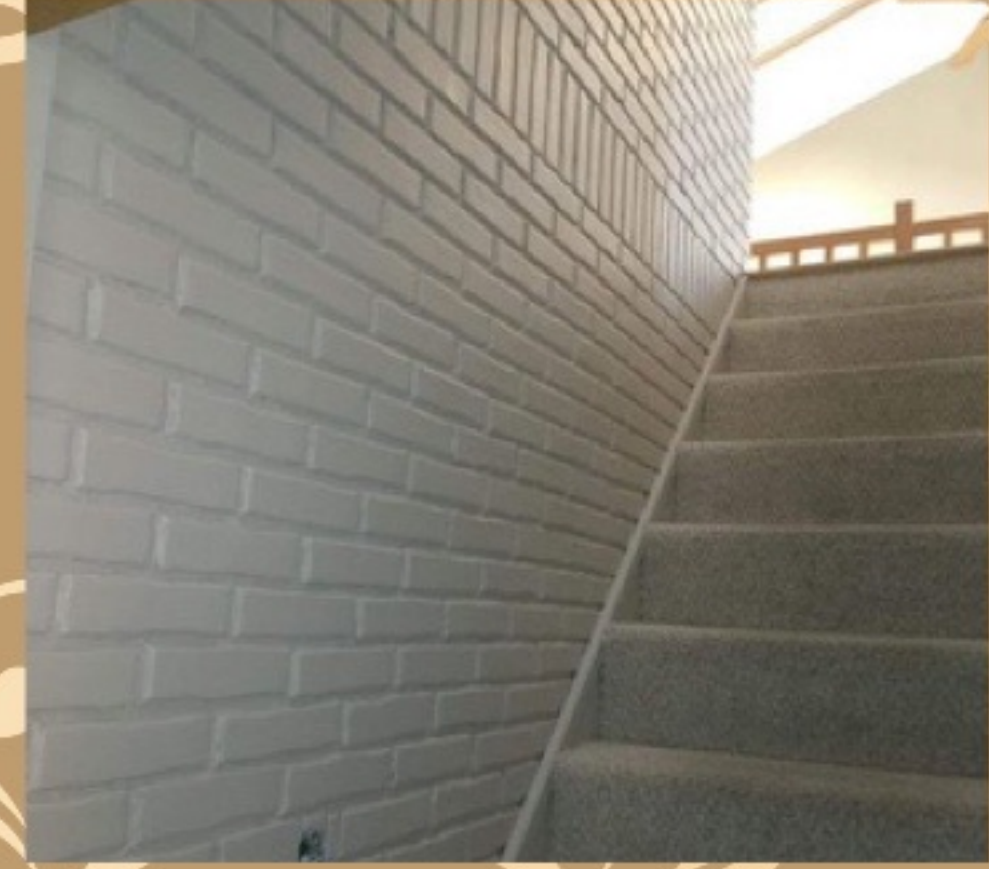
## **INSPECTION.**

Every completed interior painting job is inspected for quality by the foreman of the crew and you will get a chance to review it before you sign off on the job.





# Interior Residential Painting





# Exterior Residential Painting

## **FURNITURE.**

Move all patio and outside furniture.

## **COVERING/MASKING.**

Any surface that will not be painted will be covered or masked off before the project. Plastic will cover any furniture or floors to eliminate possible damage.

## **Repairs:**

Holes, cracks or missing texture will be repaired before the painting process begins.

## **CLEANING.**

The surface must be clean and dry before we begin – we will pressure wash all surfaces to ensure the best paint adhesion.

## **SCRAPING AND SANDING.**

All loose paint will be scraped away and surfaces sanded where needed before we begin painting.

## **PRIMING & PAINTING.**

We will apply one coat of primer to all needed substrates – or bare areas before applying any finish coats. When painting the exterior of a home, the body of the house is painted first and then the trim. We spray and back brush or back roll all substrates

## **CUTTING IN.**

Painting the edges and “cutting in” takes skill and experience to do it right. Our process uses slow, long strokes to get the best results.

## **CLEAN UP.**

All coverings and masking will be removed by our crews once the painting is completed. No mess will be left behind from our crews. Put all furniture back in its place.

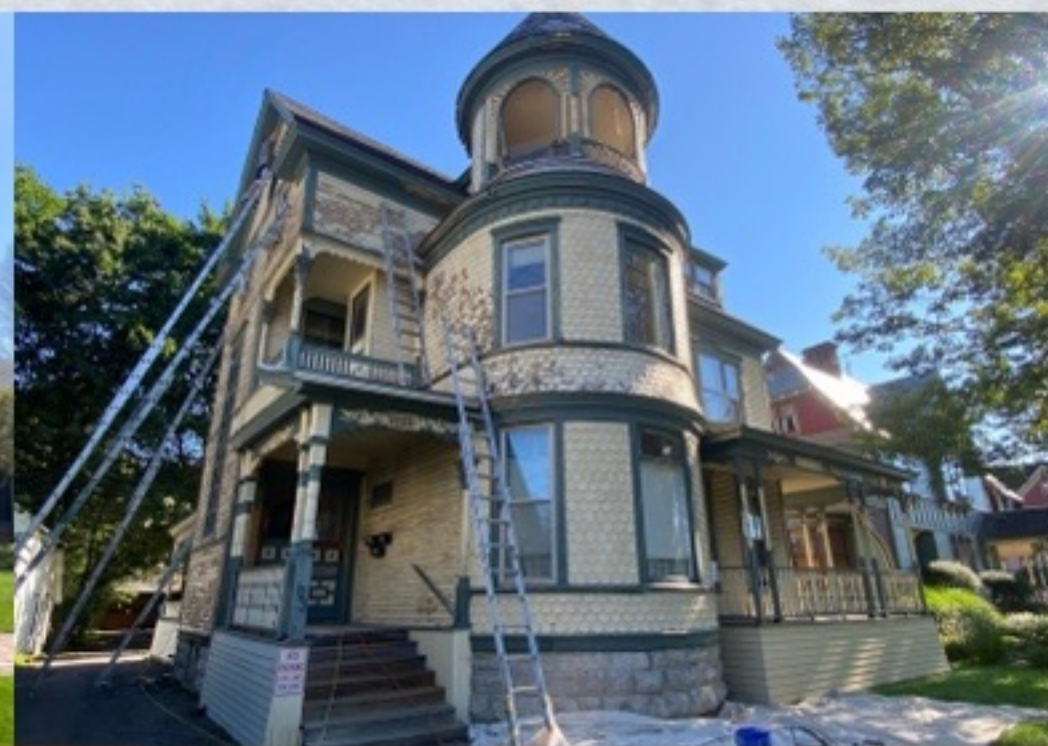
## **INSPECTION.**

Every completed exterior painting job is inspected for quality by the foreman of the crew and you will get a chance to review it before you sign off on the job.





# Exterior Residential Painting





# Commercial Interior Painting

## COVERING/MASKING.

Any surface that will not be painted will be covered or masked off before the project. Plastic will cover any furniture or floors to eliminate possible damage.

## PREPARATION:

Depending on the setting the crew may use :

- Degreaser before painting,
- Brick filler if it's a brick substrate.
- Proper primer for any substrate (brick, metal, wood).

## CLEANING.

The surface must be clean and dry before we begin – we will wipe down all surfaces to ensure the best paint adhesion

## CAULKING.

Any cracks will be re-caulked if necessary.

## SCRAPING AND SANDING.

All loose paint will be scraped away and surfaces sanded where needed before we begin painting.

## PAINTING.

Typically, we spray ceilings first to apply an even coat, trim, and then the walls with two finish coats of paint.

## CUTTING IN.

Painting the edges and “cutting in” takes skill and experience to do it right. Our process uses slow, long strokes to get the best results.

## CLEAN UP.

All coverings and masking will be removed by our crews once the painting is completed. No mess will be left behind from our crews.

## INSPECTION.

Every completed interior painting job is inspected for quality by the foreman of the crew and you will get a chance to review it before you sign off on the job.





# Commercial Interior Painting





# Commercial Exterior Painting

## **FURNITURE.**

Move all patio and outside furniture.

## **COVERING/MASKING.**

Any surface that will not be painted will be covered or masked off before the project. Plastic will cover any furniture or floors to eliminate possible damage.

## **Repairs:**

Holes, cracks or missing texture will be repaired before the painting process begins.

## **CLEANING.**

The surface must be clean and dry before we begin – we will wash all surfaces to ensure the best paint adhesion.

## **SCRAPING AND SANDING.**

All loose paint will be scraped away and surfaces sanded where needed before we begin painting.

## **PRIME & PAINT**

When painting an exterior of a building we will use the right primer for the right substrate before painting the body and the trim. We spray first to apply an even coat and then back roll or back brush for two finish coats to the body and wood trim of the house. (Customer can choose 1 coat if preferred – color to match to exactly what is there currently).

## **CLEAN UP.**

All coverings and masking will be removed by our crews once the painting is completed. No mess will be left behind from our crews. Put all furniture back in its place.

## **INSPECTION.**

Every completed exterior painting job is inspected for quality by the foreman of the crew and you will get a chance to review it before you sign off on the job.





# Commercial Exterior Painting





# Interior Cabinet Process

## **COVERING/MASKING.**

**Any surface that will not be painted will be covered or masked off before the project. Plastic will cover any furniture or floors to eliminate possible damage.**

## **CLEANING.**

**Move anything from the countertops and clean all surfaces and soiled areas.**

## **SANDING.**

**Lightly sand all wood surfaces before priming.**

**REPAIR: The crew will fix any imperfections to the cabinets.**

## **PAINTING.**

**One coat of primer will be applied before two finish coats of paint are applied to the cabinets.**

## **CLEAN UP.**

**All coverings and masking will be removed, hardware reassembled, and items returned to counter top once the painting is completed by the crew. No mess will be left behind from our crews.**

## **INSPECTION.**

**Every completed interior painting job is inspected for quality by the foreman of the crew and you will get a chance to review it before you sign off on the job.**





# Interior Cabinets





# Wallpaper Removal Process

## **COVERING/MASKING.**

Any surface that will not be painted will be covered or masked off before the project. Plastic will cover any furniture and other areas to eliminate possible damage— if furniture can't be moved out of the way.

## **CLEANING.**

After the wallpaper is removed. We will clean up any residual mess or wallpaper from floors or working area.

## **SANDING-**

Lightly sand all wood surfaces after wallpaper is removed. (Festool - 99% dustless)

## **REPAIR-**

The crew will fix any imperfections to the walls after wallpaper is removed.

**PRIMING & PAINTING** - All walls will be coated with the proper primer if needed. Then we will apply two finish coats to the walls. (And other substrates if customer desires)

## **CLEAN UP-**

All coverings and masking will be removed, items returned to the structure, and any remaining mess will be cleaned up.

## **INSPECTION-**

Every completed exterior painting job is inspected for quality by the foreman of the crew and you will get a chance to review it before you sign off on the job.







# Wall Paper Removal





# Exterior Solid Color Stain

## **COVERING/MASKING.**

**Any surface that will not be painted will be covered or masked off before the project. Plastic will cover any furniture or floors to eliminate possible damage.**

## **CLEANING.**

**Area will be cleaned and washed before stained.**

## **SANDING.**

**Lightly sand all wood surfaces before priming.**

**REPAIR: The crew will fix any imperfections to the cabinets.**

**Staining: Solid Stain is self priming. So all bare areas are hit one time (primer coat). Then one coat is applied — if customer desires. We recommend two coats for the best results. (And also require it on a color change).**

## **CLEAN UP.**

**All coverings and masking will be removed, hardware reassembled, and items returned to counter top once the painting is completed by the crew. No mess will be left behind from our crews.**

## **INSPECTION.**

**Every completed interior painting job is inspected for quality by the foreman of the crew and you will get a chance to review it before you sign off on the job.**





# Solid Color Staining





# Porch and Deck Painting Process

## **COVERING/MASKING.**

Any surface that will not be painted will be covered or masked off before the project. Plastic will cover any furniture and other areas to eliminate possible damage— if furniture can't be moved out of the way.

## **CLEANING.**

Porches and decks will be cleaned and pressure washed before being painted or stained.

## **SANDING-**

Lightly sand all wood surfaces before priming. (If needed - extra charge)

## **REPAIR-**

The crew will fix any imperfections to the structure if needed. (Repairs (\$65/hr plus materials - will be gone over with customer)

## **PAINTING-**

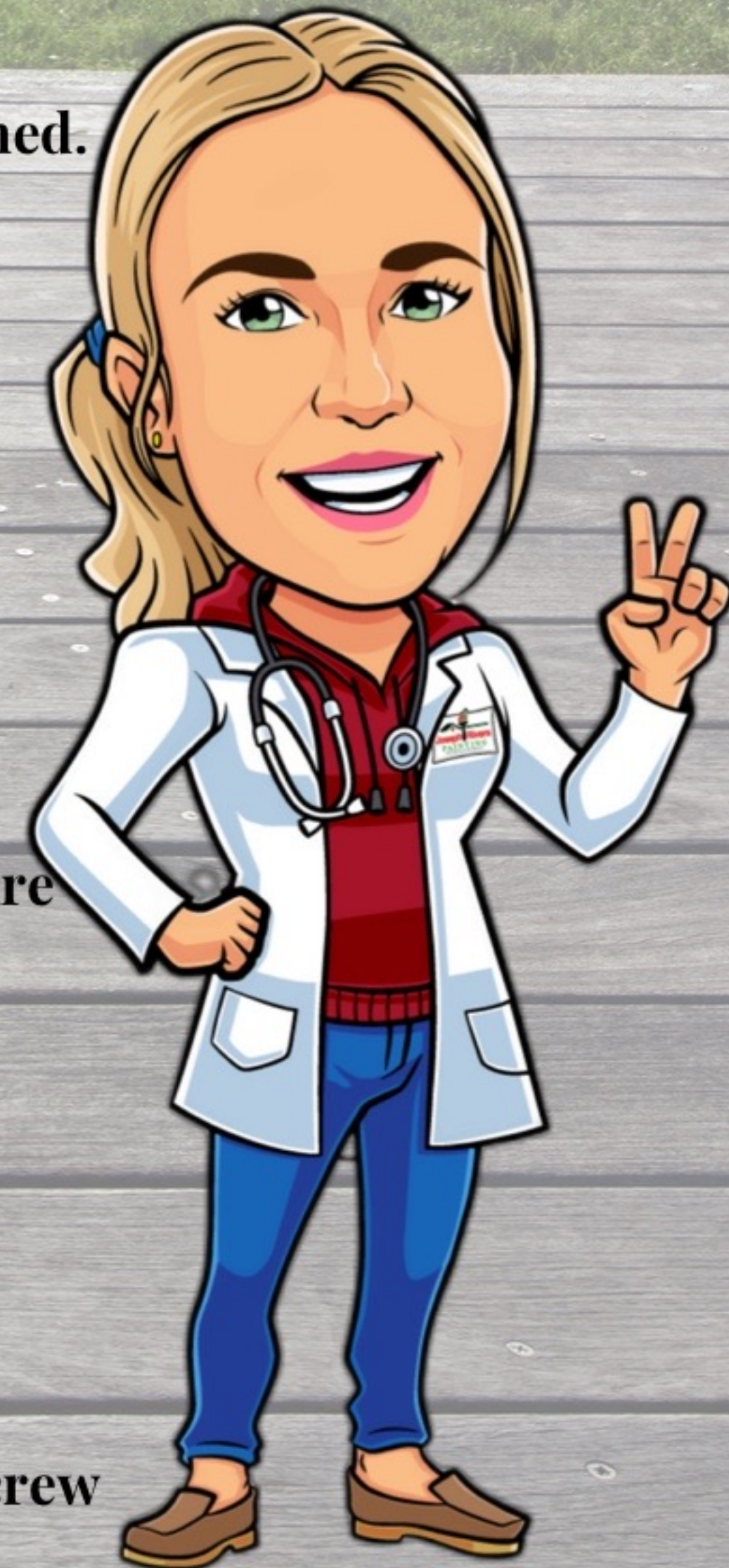
One coat of primer will be applied to any bare areas before two finish coats of paint are applied.

## **CLEAN UP-**

All coverings and masking will be removed, items returned to the structure, and any remaining mess will be cleaned up.

## **INSPECTION-**

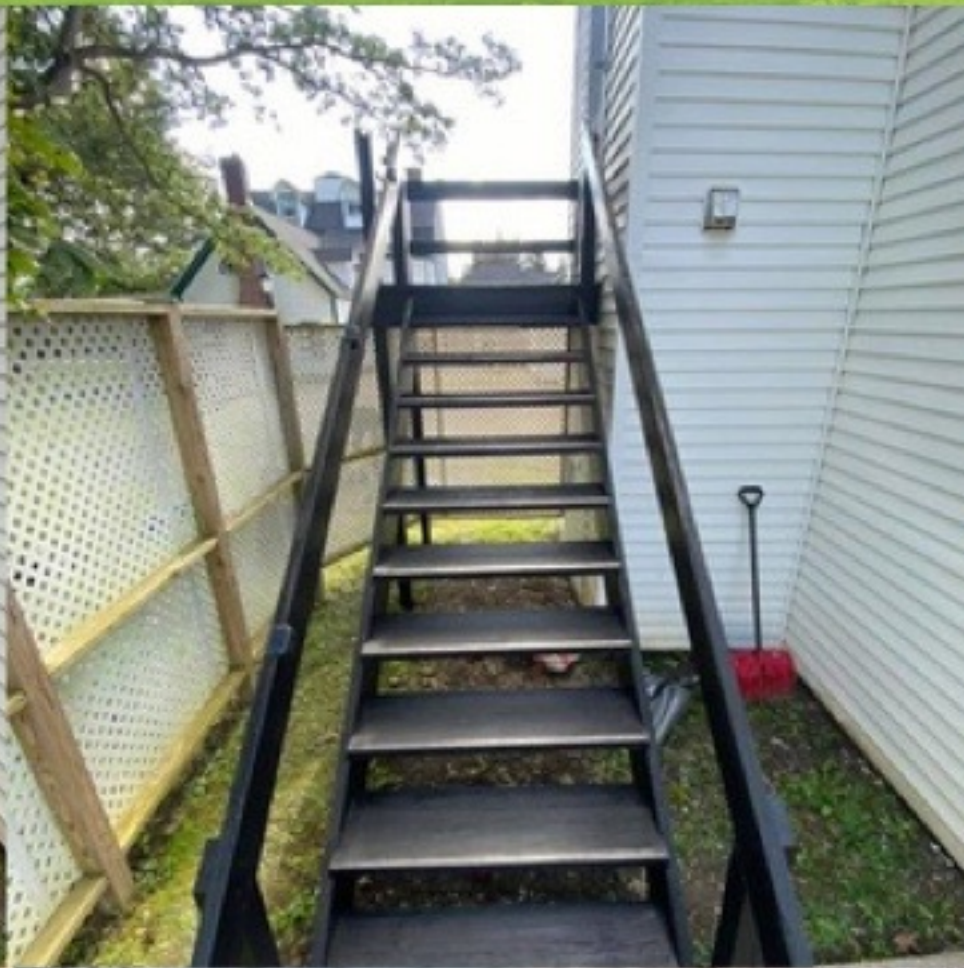
Every completed exterior painting job is inspected for quality by the foreman of the crew and you will get a chance to review it before you sign off on the job.







# Porches & Decks





# EPOXY FLOORS (FLAKE)



## COVERING/MASKING:

-Any surface that will not be epoxied will be covered or masked off before the project is started. Plastic will cover any furniture and other areas to eliminate possible damage— if furniture can't be moved out of the way.

## CLEANING:

-After masking is completed. Floors will be swept and vacuumed of all residual dust and debris.

## GRINDING:

-All surfaces that are to be done will be Ground down. (Either by a hand grinder — or a walk behind grinder)

## REPAIR:

-The crew will fix any imperfections to the Floors when grinding is completed. ( Fill cracks - and divots)

## PRIMER BASE:

-Apply the primer base (100% solid epoxy coating)

## FLAKES:

-Broadcast flakes onto primer base. (Let cure fully) - (Scrape excess flakes when cured - shop vac up)

## TOP COAT:

-Apply top coat. (Urethane clearcoat)

## CLEAN UP & INSPECTION:

-Clean up any plastic, tape, tools or extra products in around the working areas.

-Every completed exterior painting job is inspected for quality by the foreman of the crew and you will get a chance to review it before you sign off on the job.





**EPOXY**



**FLAKE**



**FLOORS**





# EPoxy

## METALLIC FLOORS



### COVERING/MASKING:

-Any surface that will not be epoxied will be covered or masked off before the project is started. Plastic will cover any furniture and other areas to eliminate possible damage— if furniture can't be moved out of the way.

### CLEANING:

-After masking is completed. Floors will be swept and vacuumed of all residual dust and debris.

### GRINDING:

-All surfaces that are to be done will be Ground down. (Either by a hand grinder — or walk behind)

### REPAIR:

-The crew will fix any imperfections to the Floors when grinding is completed. ( Fill cracks - and divots)

### BASECOAT:

-Apply the base coat (100% solid epoxy coating)

### PIGMENTED EPOXY COAT:

-Add pigmented epoxy swirls/designs to base coat. (Mix thoroughly throughout - to customer's desired vision.

### TOP COAT:

-Apply top coat. (Urethane clearcoat)

### CLEANUP & INSPECTION:

-Clean up any plastic, tape, tools or extra products in around the working areas.

-Every completed exterior painting job is inspected for quality by the foreman of the crew and you will get a chance to review it before you sign off on the job.





# **BARNEY**

## **RESTORATION**



### **FURNITURE.**

Move all patio and outside furniture.

### **COVERING/MASKING.**

Any surface that will not be painted will be covered or masked off before the project. Plastic will cover any furniture or floors to eliminate possible damage.

### **Repairs:**

Holes, cracks or missing texture will be repaired before the painting process begins.

### **CLEANING.**

The surface must be clean and dry before we begin – we will pressure wash all surfaces to ensure the best paint adhesion.

### **SCRAPING AND SANDING.**

All loose paint will be scraped away and surfaces sanded where needed before we begin painting.

### **PRIMING & PAINTING.**

We will apply one coat of primer to all needed substrates — or bare areas before applying any finish coats.

When painting the exterior of a home, the body of the house is painted first and then the trim. We spray and back brush or back roll all substrates

### **CUTTING IN.**

Painting the edges and “cutting in” takes skill and experience to do it right. Our process uses slow, long strokes to get the best results.

### **CLEAN UP.**

All coverings and masking will be removed by our crews once the painting is completed. No mess will be left behind from our crews. Put all furniture back in its place.

### **INSPECTION.**

Every completed exterior painting job is inspected for quality by the foreman of the crew and you will get a chance to review it before you sign off on the job.







# ROOF COATINGS

## **FURNITURE.**

Move all patio and outside furniture.

## **COVERING/MASKING.**

Any surface that will not be painted will be covered or masked off before the project. Plastic will cover any furniture or floors to eliminate possible damage.

## **Repairs:**

Holes, cracks or missing texture will be repaired before the painting process begins.

## **CLEANING.**

The surface must be clean and dry before we begin – we will pressure wash all surfaces to ensure the best paint adhesion.

## **SCRAPING AND SANDING.**

All loose paint will be scraped away and surfaces sanded where needed before we begin painting.

## **PRIMING & PAINTING.**

We will apply one coat of primer to all needed substrates – or bare areas before applying any finish coats.

## **CUTTING IN.**

Painting the edges and “cutting in” takes skill and experience to do it right. Our process uses slow, long strokes to get the best results.

## **CLEAN UP.**

All coverings and masking will be removed by our crews once the painting is completed. No mess will be left behind from our crews. Put all furniture back in its place.

## **INSPECTION.**

Every completed exterior painting job is inspected for quality by the foreman of the crew and you will get a chance to review it before you sign off on the job.








**Joseph Rivers**  
**PAINTING**  
 INTERIOR/EXTERIOR • RESIDENTIAL/COMMERCIAL  
*Making Your Home Beautiful, Inside and Out*  
**(607) 745-5370**



# Soft Washing



Soft washing is a gentle and effective method of cleaning exterior surfaces such as roofs, siding, fences, and decks. It involves using low-pressure water mixed with specialized cleaning solutions to remove dirt, grime, mildew, mold, and other contaminants.

The soft wash process starts with a thorough inspection of the surface to be cleaned. Our team will assess the condition and determine the appropriate cleaning solution and pressure level to use.

Next, the cleaning solution is applied to the surface using a specialized sprayer. The solution is allowed to sit for a short period of time to break down the contaminants.

Afterwards, the surface is gently rinsed with low-pressure water, taking care not to damage any delicate areas such as windows or landscaping. This step effectively removes the contaminants and leaves the surface clean and refreshed.

Soft washing is a safe and eco-friendly alternative to high-pressure washing, which can cause damage to certain surfaces. It is also more effective at killing and removing organic growth such as algae and moss.



# Festool Dustless Sander (99% effective)

**YES, THAT'S CORRECT! JOSEPH RIVERS PAINTING UTILIZES FESTOOL EQUIPMENT, WHICH IS RENOWNED FOR ITS 99% DUSTLESS CAPABILITIES. THIS STATE-OF-THE-ART EQUIPMENT ENSURES A CLEAN AND HEALTHY ENVIRONMENT DURING THE PAINTING PROCESS, MINIMIZING ANY INCONVENIENCE OR DISRUPTION TO YOUR HOME OR WORKSPACE. WITH OUR COMMITMENT TO QUALITY AND CUSTOMER SATISFACTION, YOU CAN TRUST THAT JOSEPH RIVERS PAINTING WILL PROVIDE EXCEPTIONAL RESULTS WHILE PRIORITIZING YOUR SAFETY AND COMFORT. WE HAVE MULTIPLE WANDS, SANDERS, EXTRACTORS, VACUUMS AND OTHER TOOLS FOR EACH AND EVERY CREW.**









Joseph Rivers Painting



**Joseph Rivers**  
**PAINTING**

INTERIOR/EXTERIOR • RESIDENTIAL/COMMERCIAL

*Making Your Home Beautiful, Inside and Out*

**(607) 745-5370**





Thank you for considering Joseph Rivers Painting for your potential project. We are honored that you have chosen us to take a look at your space. Our team of professional painters are committed to providing exceptional service and transforming your vision into reality. We look forward to the opportunity to work with you and create something truly remarkable!

*Thank You!*  
*FROM THE TEAM AT JRP*

